

Installation of Symantec Anti-Virus 9.0 Software “Off-Campus – Windows Workstations”

**Information Technology Services
User Support Services
October 2004
Version 2.0**

Installation of Symantec AntiVirus 9.0 Software “Off-Campus – Windows Workstations”

Overview

A computer virus is most often defined as malicious computer code. A computer virus is designed to install, propagate and cause damage to computer files and data without the knowledge and/or express permission of the user.

With the proliferation of computer viruses and worms (another malicious code that can damage or destroy data) in recent years; the need to install, run and maintain the latest version of antivirus software that scans for viruses and worms is essential. Attacks that combine viruses, worms and malware (code that uses application and operating system features to propagate and damage computer data) are have proliferated world-wide and make anti-virus software underscore the importance of user awareness and preventative measures.

These instructions are a guide through the process of installing Symantec AntiVirus 9.0 software.

For more information visit the [AntiVirus page](#).

Installation of Symantec AntiVirus 9.0 Software “Off-Campus – Windows Workstations” Installation of Symantec AntiVirus v9.0

Step 1

1. Unzip the Symantec Antivirus 9.0 PC to you desktop.

2. Open the Folder and Double Click “setup.exe”

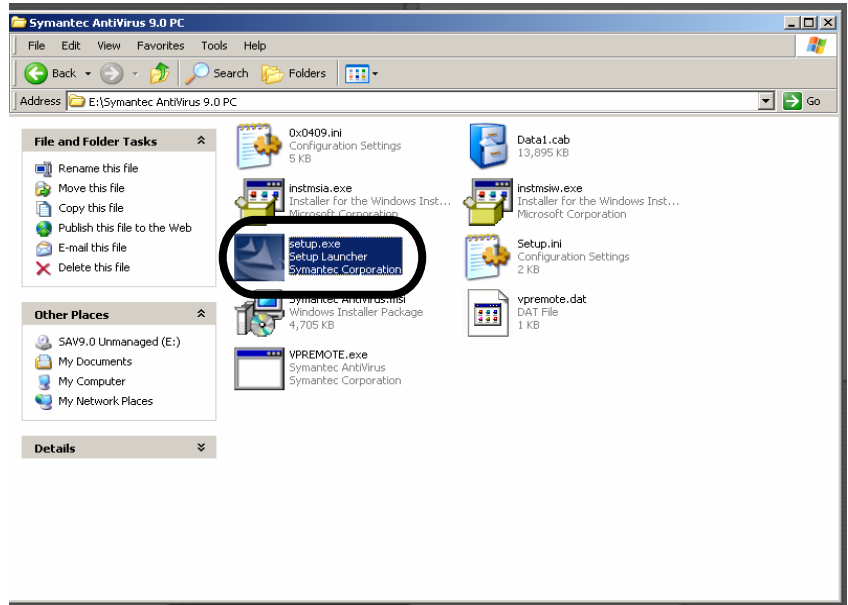


Figure 1: This is an example only. Your screen may vary slightly.

Step 2

Insert Symantec AntiVirus CD – This installation screen will be launched automatically. Click Next to start the installation process.

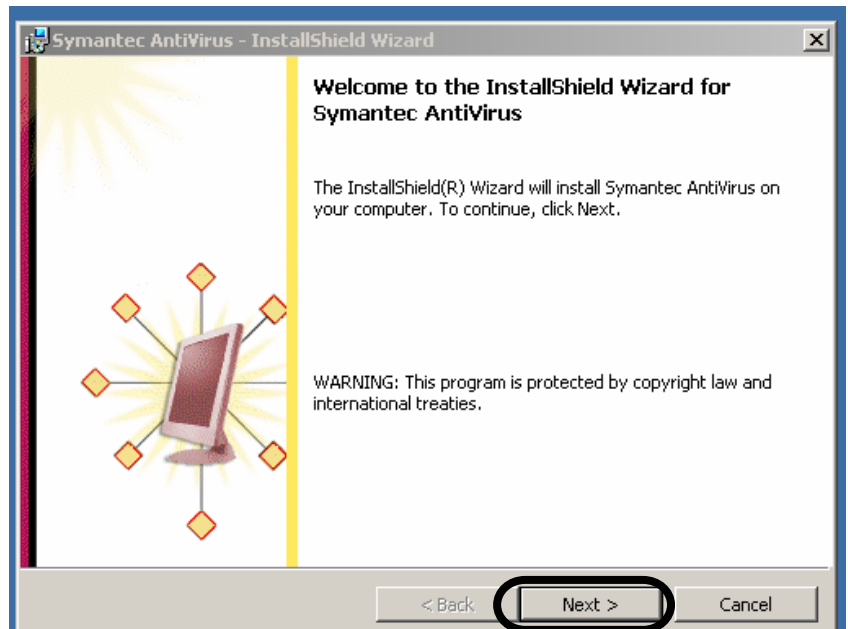


Figure 2: This is an example only. Your screen may vary slightly.

Installation of Symantec AntiVirus 9.0 Software “Off-Campus – Windows Workstations”

Step 3

Click “Install Antivirus 1”. Check “I accept the terms in the license agreement”

2. Click “Next”

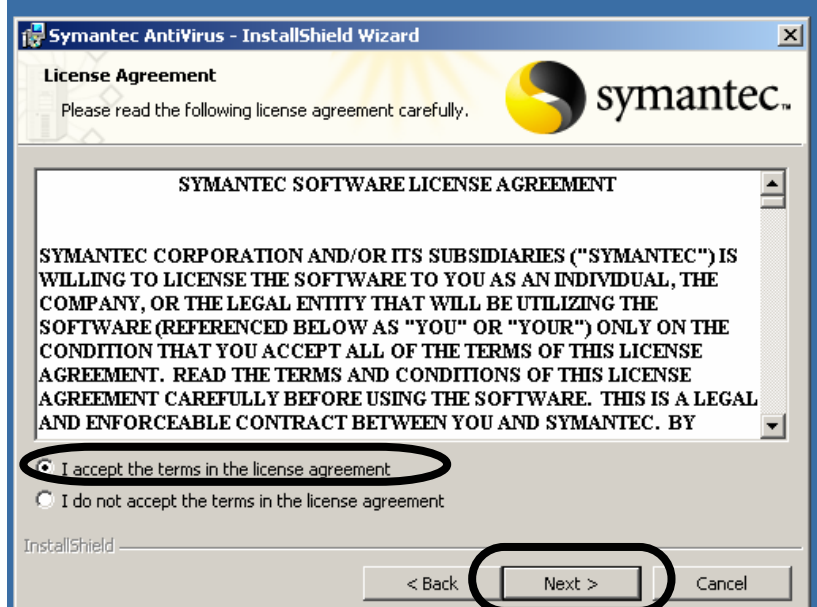


Figure 3: This is an example only. Your screen may vary slightly.

Step 4

1. Check “Client Install”

2. Click “Next”

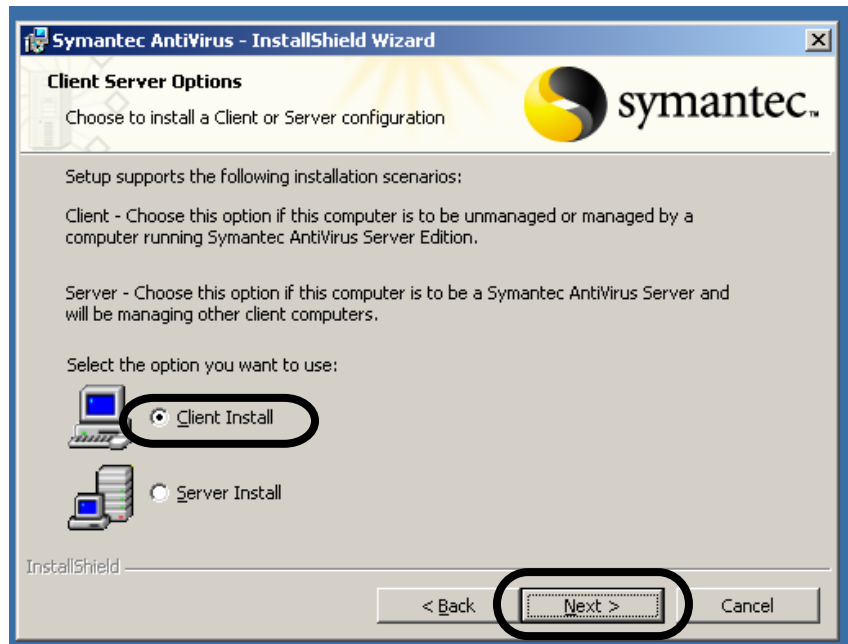


Figure 4: This is an example only. Your screen may vary slightly.

Installation of Symantec AntiVirus 9.0 Software “Off-Campus – Windows Workstations”

Step 5

1. Check “Complete”
2. Click “Next”

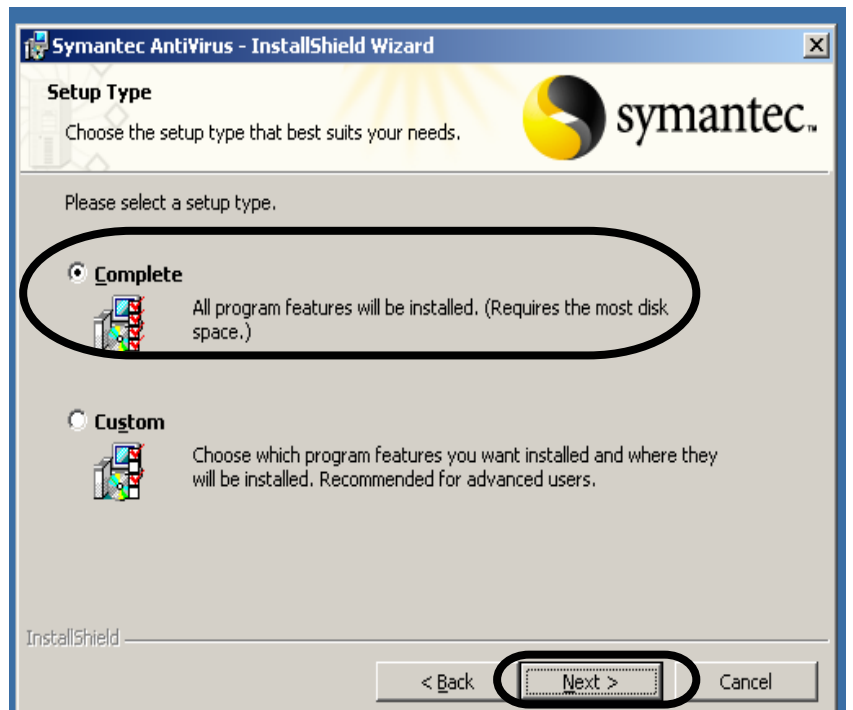


Figure 1: This is an example only. Your screen may vary slightly.

Step 6

- Check “Unmanaged”

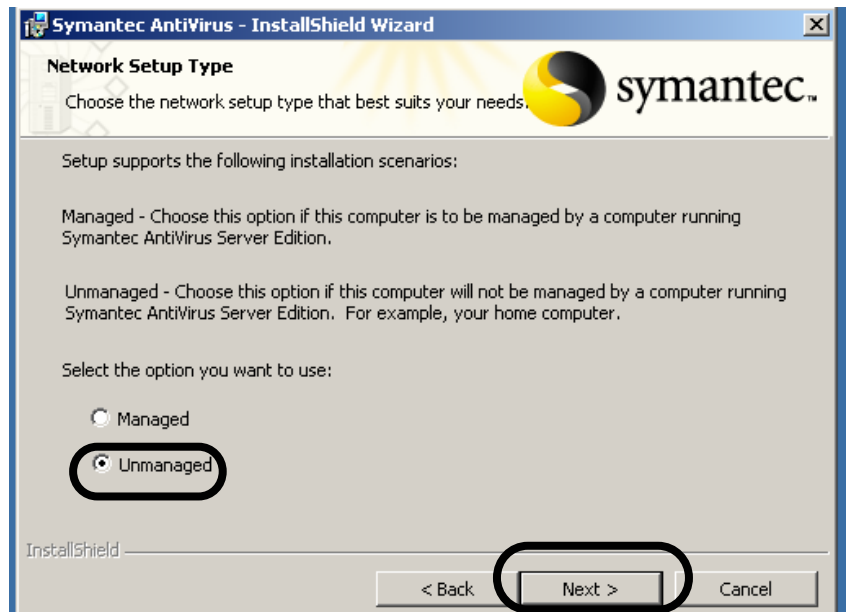


Figure 6: This is an example only. Your screen may vary slightly.

Installation of Symantec AntiVirus 9.0 Software “Off-Campus – Windows Workstations”

STEP 7

1. Check “Auto-Protect”
2. Check “Run LiveUpdate”
3. Click “Next”



Figure 7: This is an example only. Your screen may vary slightly.

Step 8

- Click “Install”

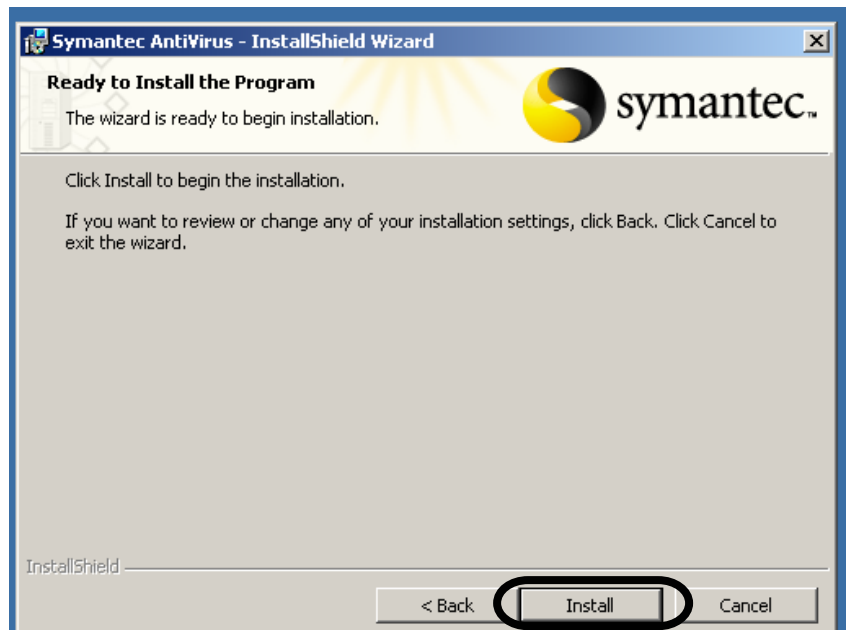


Figure 8: This is an example only. Your screen may vary slightly.

Installation of Symantec AntiVirus 9.0 Software “Off-Campus – Windows Workstations”

Step 9

Wait for the installation process to complete

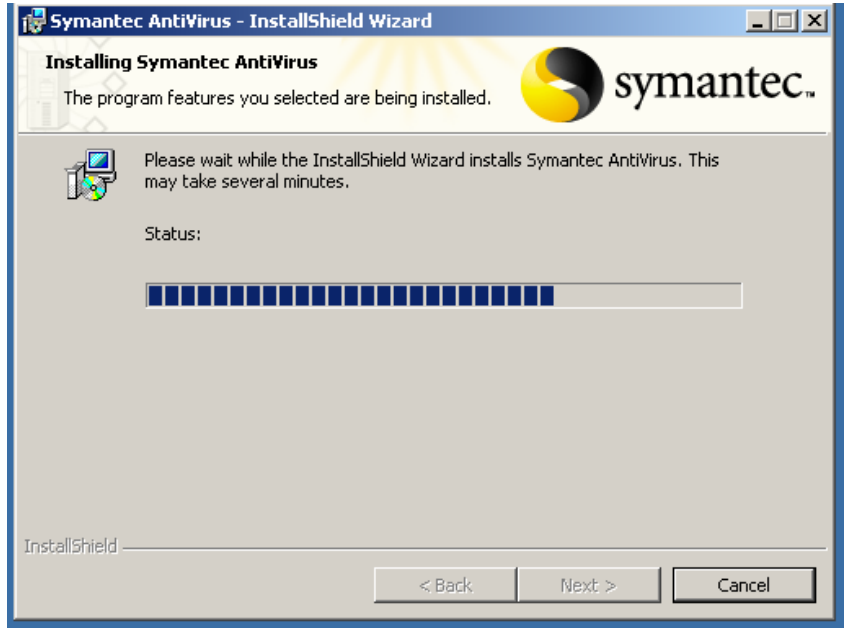


Figure 9: This is an example only. Your screen may vary slightly.

Step 10

Click “Next” to begin the “LiveUpdate” process. This will update Symantec AntiVirus with the latest virus definitions.



Figure 10: This is an example only. Your screen may vary slightly.

Installation of Symantec AntiVirus 9.0 Software “Off-Campus – Windows Workstations”

Step 11

Click “Finish” after updates have installed.

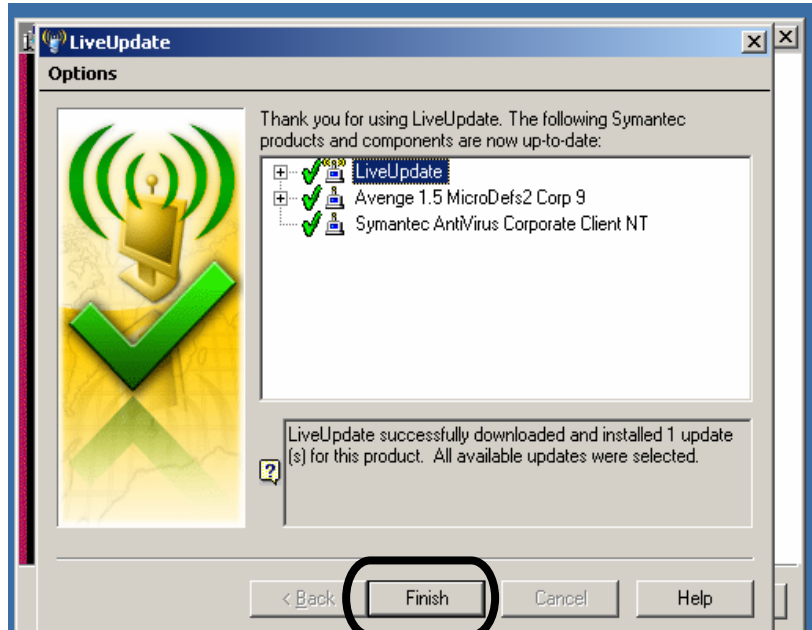


Figure 11: This is an example only. Your screen may vary slightly.

Step 12

Wait for the update process to complete.

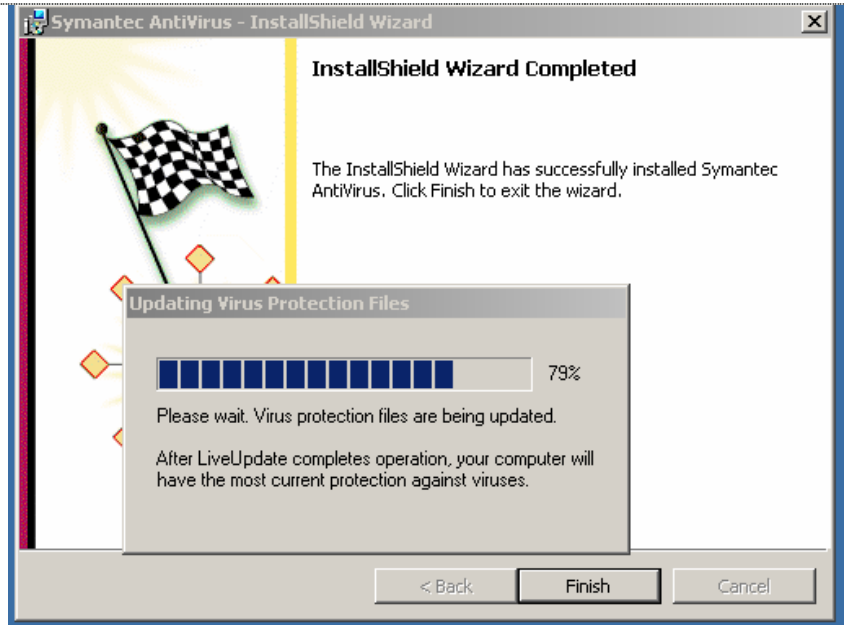


Figure 12: This is an example only. Your screen may vary slightly.

Installation of Symantec AntiVirus 9.0 Software “Off-Campus – Windows Workstations”

Step 13

Click “Finish” to complete the installation process of Symantec AntiVirus.

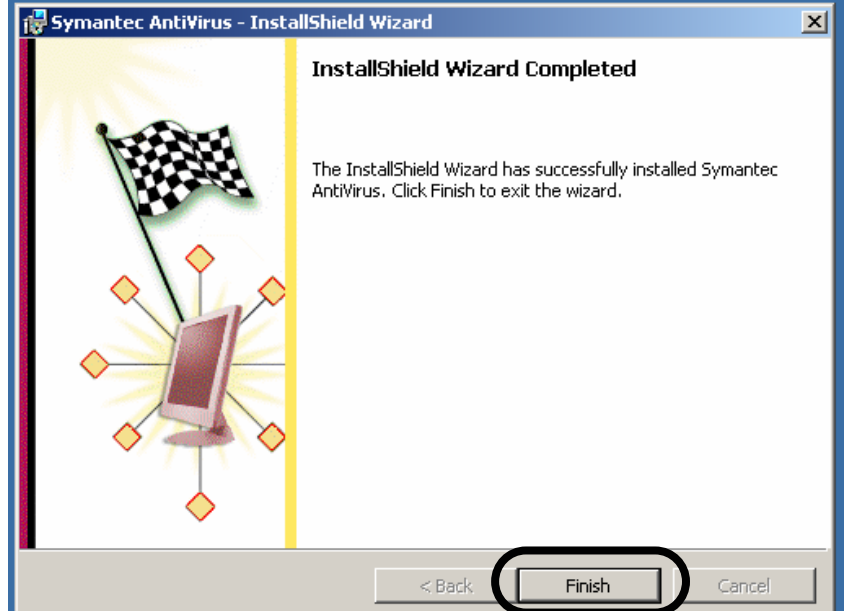


Figure 13: This is an example only. Your screen may vary slightly.

CONGRATULATIONS!

You now have correctly installed Symantec AntiVirus 9.0.

If you have any problems or question with your on-campus workstation installation, contact your LAN Coordinator or the ITS Help Desk at 756-7000.